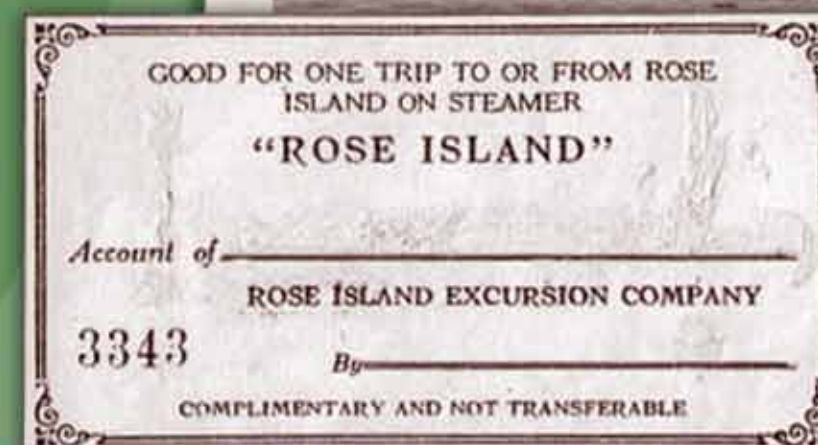


# All Aboard the Steamboats!

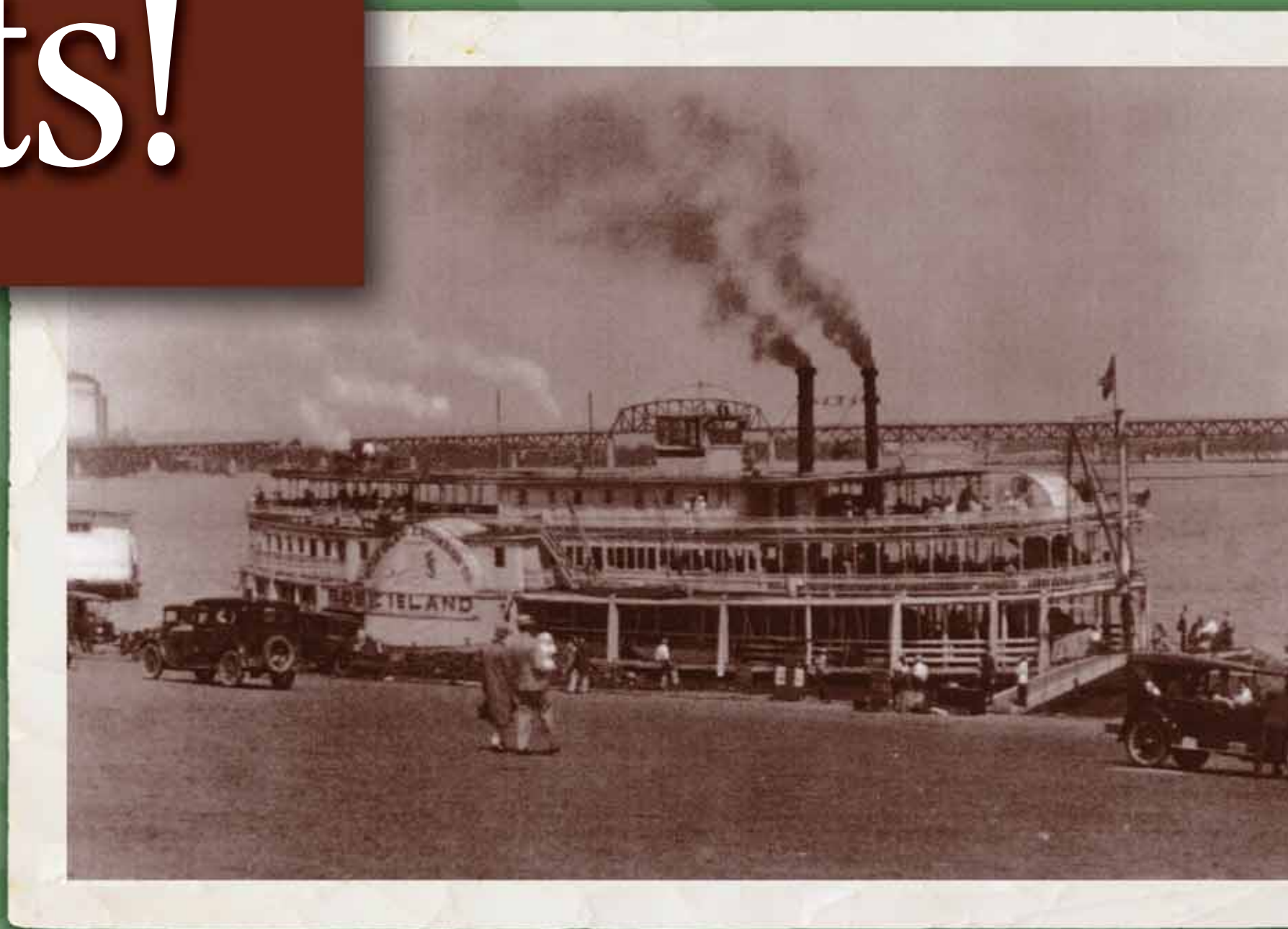
## Steamboats bring thousands to Rose Island

Most visitors traveled to Rose Island by steamboat. The steamer Idlewild made the 90-120 minute trip from Louisville every day of the season. Steamers like the Liberty and the Sunshine shuttled visitors from other river towns.



## The biggest steamer of all

Carrying up to 4,000 passengers in a single trip to Rose Island, the steamer America (*left*) was one of the largest river steamers in the county. At 286 feet long and 83 feet wide, America was often chartered for clubs and churches planning annual picnics at the resort. Adult tickets cost 25 cents and children cost 15 cents.



For commuters who occupied cottages or hotel rooms, motorboats offered transportation to and from Rose Island.

"As a kid, I lived at Rose Island. My dad was head of security. My family lived in one end of the old hotel. I remember when the boat would come in, Mother said I would go under the bed when I heard the whistle."

—Marvin Bernhart

## Did You Know?

The steamer America could be chartered to take 1200 people, round trip, from Louisville to Rose Island for \$200.